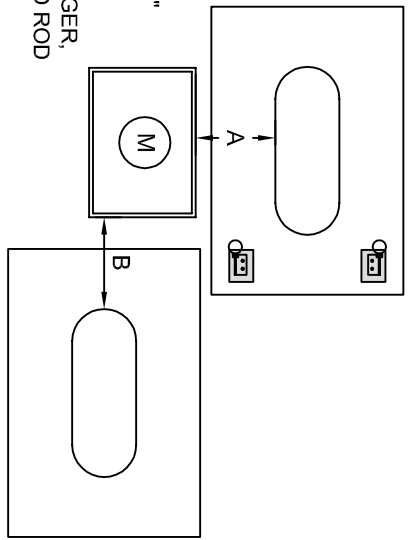


**HARDWARE:** TYPE 1-PIPE 1/2" THRU 2", TYPE 304 S.S. ADJUSTABLE CLAMPS. TYPE 2-CLAMPS 2 1/2" & LARGER, USE 3/8" STEEL ALL THREAD ROD "U" BOLTS.



- NOTES:**
1. PADS ARE MOLDED POLYOLEFIN PLASTIC WITH U-V INHIBITORS AND ANTI-OXYDANT PROPERTIES.
  2. ALL PADS ARE 3" HIGH, SURFACE DECK 5/16" THICK, MONOLITHIC RIBS 3/8" THICK, ON 6" CENTERS.
  3. DECK REINFORCED WITH 3/4" THICK H.D.P.E. BLOCKS AT ALL HINGES.
  4. EYE BOLTS FOR PADLOCKS ATTACHED TO RIBS OR BLOCK FOR MAXIMUM STRENGTH.

MODELS	FITS GUARDSHACK™/ COAST GUARDSHACK™	EncPad™ DIMENSIONS	BRACKET SIZE	BRACE SIZE	HOLE DIMENSION	MIN. CLEARANCES		HARDWARE TYPE
						A	B	
EP-5	GS-5	24"W X 24"L	10"	N/A	6"W X 8"L	8"	9"	1
EP-1	GS-1/CGS-1/EC-1	24"W X 36"L	10"	N/A	8"W X 21"L	7"	8"	1
EP-2	GS-2/CGS-2/EC-2	24"W X 42"L	10"	N/A	8"W X 29"L	6"	8"	1
EP-3	GS-3/CGS-3/EC-3	24"W X 48"L	10"	N/A	8"W X 38"L	6"	8"	1
EP-3.3	GS-3.3/CGS-3.3/EC3.3	24"W X 42"L	10"	N/A	8"W X 29"L	6"	8"	1
EP-3.5	CGS-3.5/EC-3.5	24"W X 48"L	10"	N/A	8"W X 38"L	6"	8"	1
EP-4	GS-4/CGS-4/EC-4	30"W X 60"L	10"	24"	7"W X 44"L	8"	13"	2
EP-4.5	GS-4.5/CGS-4.5	24"W X 72"L	15"	43"	8"W X 62"L	5"	8"	2
EP-5	GS-5/CGS-5	36"W X 84"L	15"	43"	11"W X 64"L	5"	13"	2
EP-M1	GS-M1/GS-M2/CGS-M1/CGSM2	30"W X 30"L	10"	N/A	8"W X 15"L	7"	11"	1
EP-M3	GS-M3/GS-M4/CGS-M3/CGSM4	30"W X 60"L	10"	24"	8"W X 36"L	12"	11"	2
EP-NP-1	GS-NP-1/CGS-NP-1	46"W X 48"L	15"	6"	10"W X 26"L	11"	18"	2

BACKFLOW PREVENTION DEVICE ENCLOSURES  
 3831 E. GROVE STREET  
 PHOENIX, ARIZONA 85040 (602) 426-1002

# EncPad™ DIMENSIONAL SIZING CHART

SCALE: 1" = 1"  
 DETAIL NO. BPD-010509  
 REV. 0